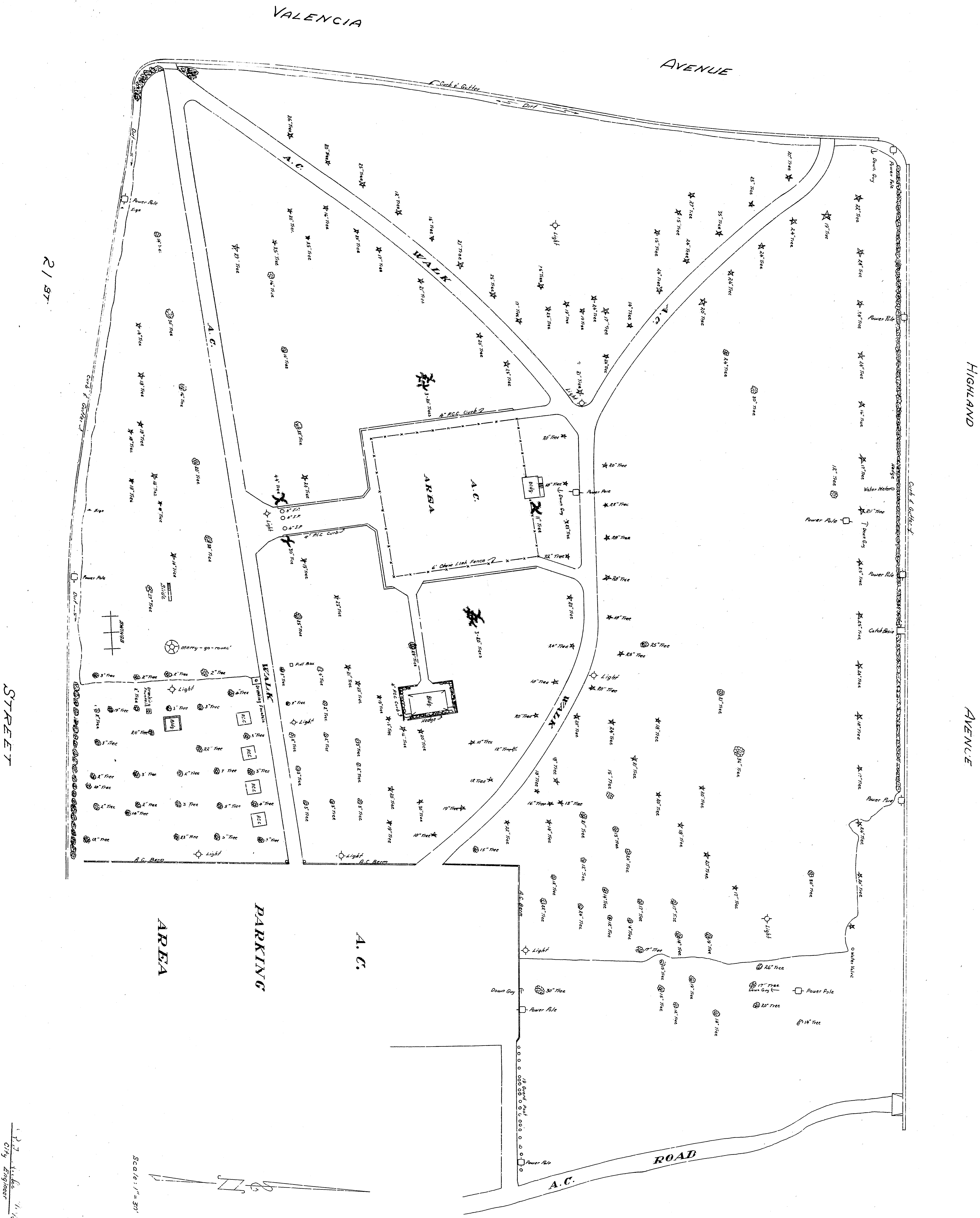
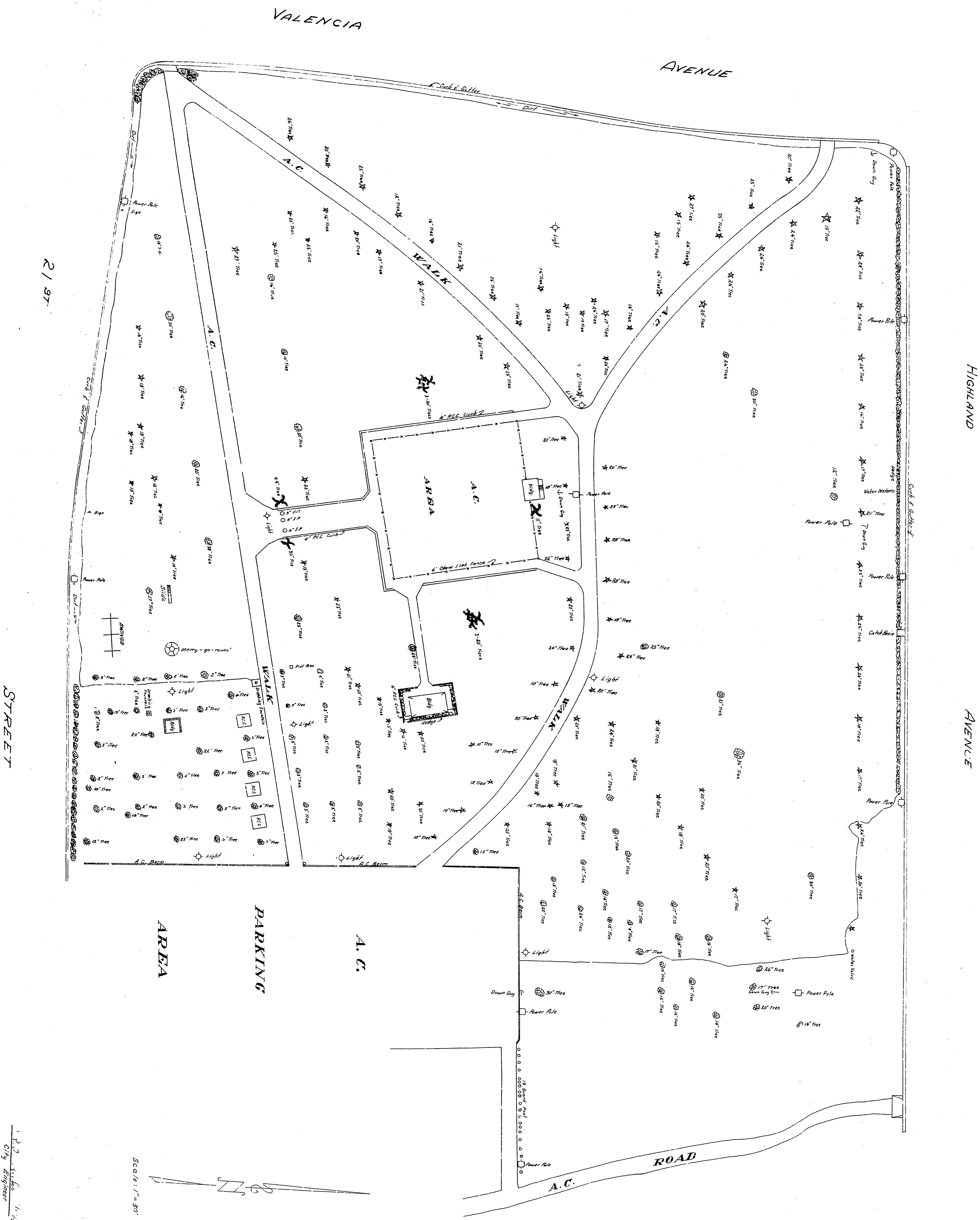


TOPOGRAPHY  
 PERRIS HILL PARK  
 CITY OF SAN BERNARDINO  
 DEPARTMENT OF ENGINEERING





TOPOGRAPHY  
 PERRIS HILL PARK  
 CITY OF SAN BERNARDINO  
 DEPARTMENT OF ENGINEERING



Scale: 1" = 20'

1/2" = 10' (Vertical)



